

EXISTING PIPEWORK RISER IS CURRENTLY WITHIN LIFT SHAFT AND INACCESSIBLE. NEW 600mm WIDE TRAY TO BE INSTALLED AGAINST BRICK WALL TO LIFT SHAFT AND RUN FROM ROOF TO LOW LEVEL. 3RD BETWEEN WALL AND DOWNSTAND BEAM TO EACH FLOOR. WALL AROUND TRAY TO BE THERMALLY INSULATED. ACCESS DOOR TO BE PROVIDED (600mm Wx1500mm H) FOR FUTURE ACCESS AT EACH FLOOR.

NEW ROOF PLANT TO BE TRANSPORTED FROM GROUND FLOOR RECEPTION, THROUGH 800mm WIDE LIFT DOORS AND UP TO 5TH FLOOR BEFORE BEING LIFTED TO ROOF LEVEL VIA ACV USING MOBILE LIFTING GEAR

150mm $\phi$  TOILET EXTRACT DUCT FROM HIGH LEVEL 5TH TO LOW LEVEL ROOF (FD IN SLAB AND AP BELOW)

ELECTRIC RADIANT HEATER

100x150MM TOILET EXTRACT DUCT BELOW TO LOW LEVEL ROOF

300x150MM SUPPLY DUCT FROM LOW LEVEL ROOF TO LOW LEVEL 3RD FLOOR

300x150MM SUPPLY DUCT FROM LOW LEVEL ROOF TO LOW LEVEL 4RD FLOOR

FANCOIL UNIT MOUNTED TO THE UNDERSIDE OF SOFFIT. PLENUM BOX TO BE PROVIDED BY MANUFACTURER COMPLETE WITH 2No. SIDE AND 2No. FRONT 250MM $\phi$  SPLGOTS. ALL UNUSED SPLGOTS TO BE UNCAPPED

1900x1100MM ACCESS PANEL WITHIN SUSPENDED CEILING FOR FAN COIL UNIT

100MM $\phi$  FRESH AIR SUPPLY DUCT FROM ROOF TO HL 5TH FLOOR COMPLETE WITH FD & AP, VCD WITHIN HORIZONTAL DUCT.

COPPER CONDENSATE TO CONNECT TO STUB STACK AT HL VIA A NEW 'HEPVO' VALVE

MAKE UP AIR VIA UNDERCUT DOOR

ELECTRICAL RADIANT HEATER

1600mmx1400mm ACCESS PANEL FOR FCU ACCESS

RETURN AIR TEMPERATURE SENSOR AT REAR OF ALL FANCOIL UNITS TO CONTROL SUPPLY TO SPACE

RETURN VIA NEW 30mm WIDE SHADOW GAP AS INDICATED WITHIN CEILING EDGE

2No. 450x150mm OFFICE EXTRACT DUCTS FROM BELOW TO ABOVE

400mmx125mm MAIN OFFICE SUPPLY DUCT FROM PLANT ROOM THROUGH SIDE WALL AND DISTRIBUTED TO EACH FAN COIL UNIT ABOVE THE SUSPEND CEILING VOID. (SEE PHOTE 001)

REFRIGERANT PIPEWORK/ TRAY FROM ROOF TO HIGH LEVEL GROUND TO SERVE RECEPTION FAN COIL UNIT

REFRIGERANT PIPEWORK AND CONDENSATE TO DROP TO HL OF THE LOWER SLAB AREA AND CONTINUE HORIZONTALLY AS INDICATED

300x150MM OFFICE SUPPLY DUCTS FROM ABOVE TO BELOW

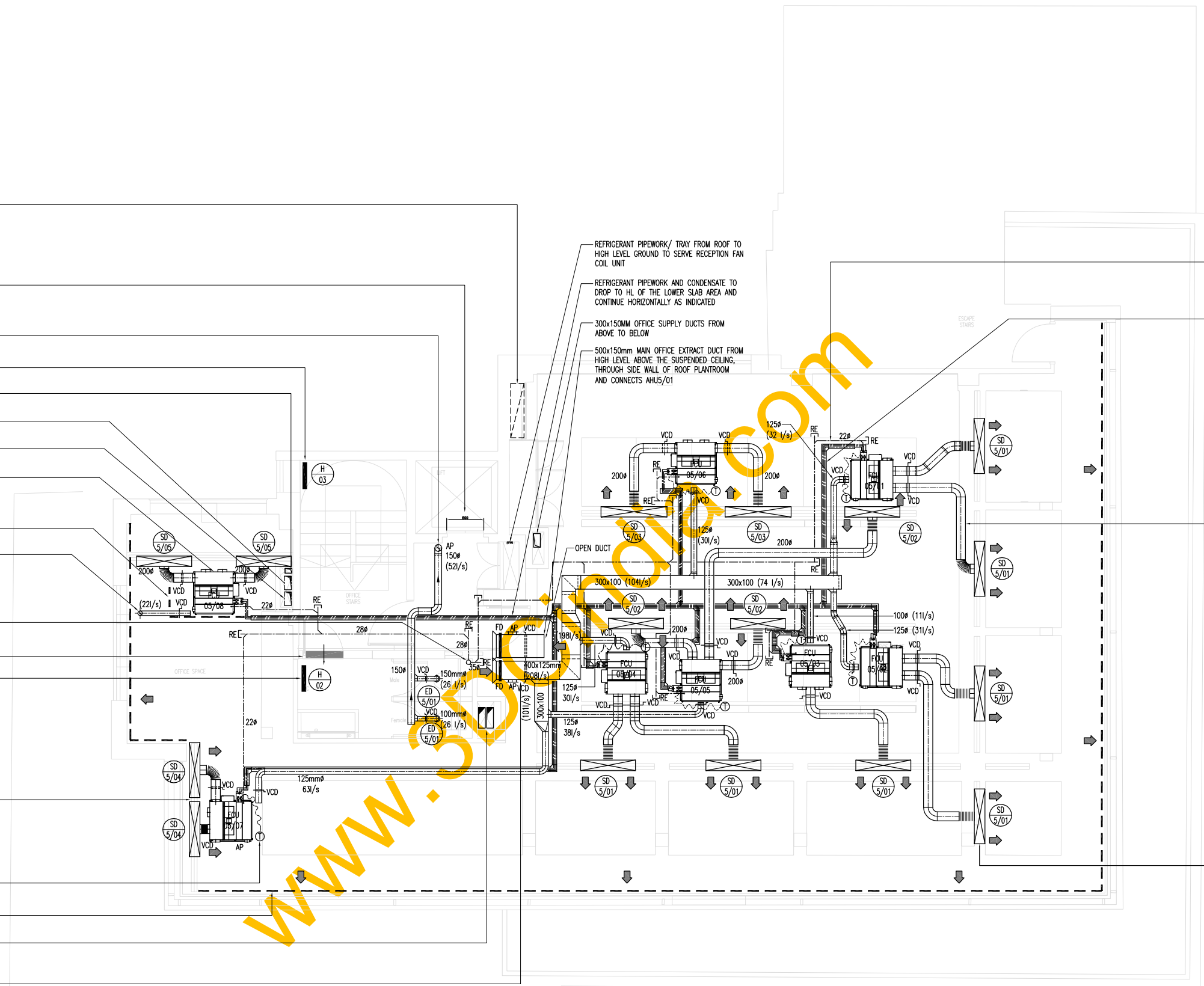
500x150mm MAIN OFFICE EXTRACT DUCT FROM HIGH LEVEL ABOVE THE SUSPENDED CEILING, THROUGH SIDE WALL OF ROOF PLANTROOM AND CONNECTS AH05/01

CONDENSATE PIPEWORK (COPPER) MINIMUM FALL OF 1:100 (TYPICAL)

REFRIGERANT PIPEWORK FROM EACH FAN COIL UNIT PIPEWORK TO BE CLIPPED TO TRAY WHICH WILL BE SUPPORTED FROM EXISTING STRUCTURE

THERMALLY INSULATED SECONDARY DUCTWORK FROM FANCOIL UNIT TO PLENUM BOX COMPLETE WITH INLINE VOLUME CONTROL DAMPER (VCD). PLENUM SPLGOT TO BE RAISED ABOVE BEAM TO ALLOW DUCT CONNECTION AS INDICATED

3 SLOT LINER DIFFUSER WITH THERMALLY INSULATED PLENUM OVER



WWW.S...COM

© copyright					
		Client		CLIENT1 CLIENT2	
		Contract		CONTRACT1 CONTRACT2	
		Drawing Title		TITLE1 TITLE2	
		Scale	Date	Drawn	Drawn
		SCALE	DATE	DRAWN	DRAWN
		Drawing Number			Revision
		DRAWING_NO			REV
REVISION HISTORY					
REV No	DATE	DESCRIPTION	DRAWN		